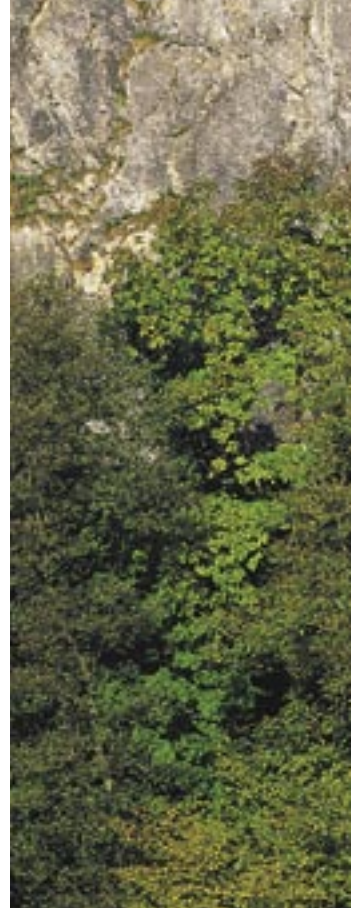


A
LONGING
FOR NATURAL
STONE

Wallonia, land of stones, stones of our land



For centuries, the richness of the subsoil to be found in Wallonia has facilitated the extraction of countless varieties of ornamental rocks. Facing profitability and fierce competition from non-local sources, forty ornamental stone quarries are currently in operation, most of which are members of the "PIERRES et MARBRES de WALLONIE" association. Their production covers about fifteen rock types of various natures and textures.



DEMAND
THE ORIGINAL!





CALCAREOUS STONES

■ **BLUE STONES**

Petit granit - Belgian blue limestone	6
Vinalmont Meuse limestone	8
Longpré Meuse limestone	9
Tournai stone - Tournai black	10

■ **MARBLES**

Black marble	11
Coloured marbles	12

■ **WHITE STONES**

Fontenoille sandy limestone	14
Gobertange sandy limestone	15

SILICEOUS STONES

■ **CONDROZ SANDSTONE**

16

■ **ARKOSE**

18

■ **QUARTZITE**

19

■ **SCHISTOSE SANDSTONE**

20

■ **SCHIST**

22

■ **FLINT**

23

DID YOU KNOW

that...

... ORNAMENTAL STONE IS AN IMPORTANT **SOURCE OF NATURAL WEALTH** FOR THE WALLOON REGION?

17 varieties of superior quality stone are currently being exploited to meet demands in architecture, urban development, interior design and landscaping.

... STONE FROM THE WALLOON REGION IS **EXPORTED**?

With an annual production total of 950,000 tonnes gross weight, Belgium is ranked 4th out of European exporters of ornamental stone and 9th overall in the world, covering 2,6 % of world's export with 60 % finished products.



... STONE IS A **CONTEMPORARY, ATTRACTIVE MATERIAL**?

Used for coating, finishes and decoration, but also for structural purposes, stones number among the materials preferred by architects, who continue to choose them for their intrinsic qualities, making judicious selections according to each specific usage.

... THE WALLOON STONE SECTOR IS WIDELY RECOGNIZED IN **EUROPE** AND THROUGHOUT THE **WORLD**?

Thanks to constant efforts, investments and age-old expertise, Walloon quarries remain some of the most modern and successful in Europe. Nowadays there are almost forty quarries supplying products with high added value and remarkable quality.



Xhofraix - Arch. L. Nelles

... STONE PLAYS ITS PART IN THE GLOBAL POLICY OF **SUSTAINABLE DEVELOPMENT**?

This is one of the few industries to produce practically no harmful emissions or atmospheric pollution. Moreover, the geographical proximity of the quarries and construction sites means that environmental pollution caused by transport is considerably reduced.

Den Haag (N)

... STONE POSSESSES
EXCEPTIONAL QUALITIES FOR
CONSTRUCTION ?

Our native stones have proved impressively resistant to bad weather and shown great stability, hence their well-known reputation for reliability.



Brussels - Arch. J.N. Capart



Flaineaux - Arch. D. Diethier

... YOU CANNOT **CULTIVATE**
STONE ?

It has taken over 300 million years for stone to achieve its maturing process and its maximum potential. Responsible and careful management of the reserves ensures that this common heritage is not wasted.

... BUILDING WITH STONE IS
MORE **ECONOMICAL** ?

Exceptionally resistant over time, stone offers a long lasting investment, appreciable every day and for decades to come. What is more, its patina adds to its beauty and worth. And let's not forget that, despite what is generally believed, stone is easy and inexpensive to maintain.



Brussels - Arch. Aggra



... STONEMWORKING IS A JOB
FOR **SPECIALISTS** ?

It takes dozens of skilled experts, working in turn, to extract, transform, cut and maintain the stone, in its journey from quarry to building site, using craftsmen's techniques in conjunction with state-of-the-art technology.

Honed blue (scale 1:1)

CALCAREOUS STONES | BLUE STONES

Petit granit - Belgian blue limestone



ALSO KNOWN AS / VARIETIES

Blue stone, *Petit granit - Pierre bleue de Belgique®* / *Petit granit du Bocq*



EXTRACTION ZONE

Basins of Soignies, Ourthe-Ambève and Bocq, provinces of Hainaut, Liège and Namur



MINERALOGICAL COMPOSITION

Calcite \pm 96 %, traces of dolomite, quartz and pyrite



MAXIMUM DIMENSIONS OF ROUGH BLOCKS

Length 4,5 m width 2,5 m thickness 2,5 m



MINIMUM THICKNESS FOR APPLICATION

Facing 1 cm - tile 2 cm



SURFACE TREATMENT

Split, sbattu, striated, bush-hammered, sclypé, combed, chiseled, old cut, ice flowers, flamed, aged, sawn, grinded, honed, polished



COMMON APPLICATIONS

Outside: rubble stone, floor tile, paving stone, dressed stone, border, sill, thin cladding, window and door sill, stair, wall coping, rockfill, urban equipment
Inside: floor tile, lining, skirting, stair, counter top, all the applications for marblework, dressing and sculpture



Lille - Arch. P.L. Carlier



Louvain-la-Neuve - Arch. F. De Smet



Brussels - Arch. Art & Build



Old cut (scale 1:1)



Liège - Arch. Bureau R. Greisch



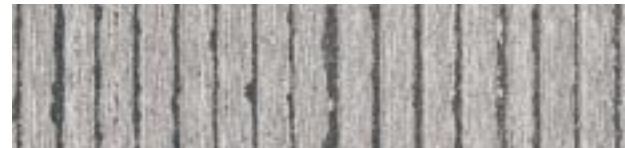
Brussels - Arch. X. Chapelle



Le Haere (F) - Arch. E.-L. Baudouin



Bush-hammered (scale 1:1)



Mechanical chiseled (scale 1:1)



Flamed (scale 1:1)



Aged (scale 1:1)



Bocq polished (scale 1:1)

CALCAREOUS STONES | BLUE STONES

Vinalmont Meuse limestone



ALSO KNOWN AS / VARIETIES

Vinalmont stone, Meuse stone, *Calcaire de Meuse dit de Vinalmont*



EXTRACTION ZONE

Region of Moha and Vinalmont, province of Liège



MINERALOGICAL COMPOSITION

Calcite > 99 %



MAXIMUM DIMENSIONS OF ROUGH BLOCKS

Length 2,2 m width 1,2 m thickness 1,35 m



MINIMUM THICKNESS FOR APPLICATION

1,5 cm



SURFACE TREATMENT

Split, sbattu, bush-hammered, sclypé, combed, chiseled, old cut, ice flowers, aged, grinded, honed, polished



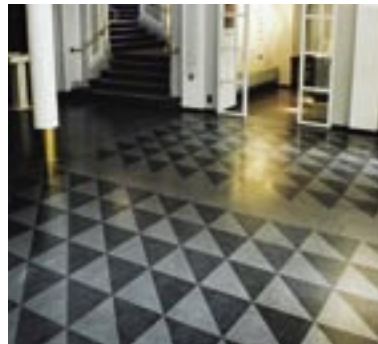
COMMON APPLICATIONS

Outside: rubble stone, floor tile, dressed stone, thin cladding, wall coping, border, window and door sill, sill, stair, rockfill

Inside: floor tile, stair, lining, skirting, furniture, all the applications for marblework, dressing and sculpture



Luxemburg (L)



Namur - Arch. Th. Lanotte



London - Arch. J. Wirz



Polished (scale 1:1)

CALCAREOUS STONES | BLUE STONES

Longpré Meuse limestone



Grez-Doiceau - Arch. A. Jacqmain



Mozet



Brussels - Arch. M. Corblau



ALSO KNOWN AS / VARIETIES

Longpré stone, Meuse stone, *Calcaire de Meuse dit de Longpré*



EXTRACTION ZONE

Valley of Meuse, province of Liège



MINERALOGICAL COMPOSITION

Calcite > 99 %



MAXIMUM DIMENSIONS OF ROUGH BLOCKS

Length 2,5 m width 1,5 m thickness 1,5 m



MINIMUM THICKNESS FOR APPLICATION

2 cm



SURFACE TREATMENT

Split, sbattu, striated, bush-hammered, sclypé, combed, chiseled, old cut, sawn, grinded, honed, polished



COMMON APPLICATIONS

Outside: rubble stone, floor tile, paving stone, dressed stone, sill, thin cladding, wall coping, border, window and door sill, stair, rockfill

Inside: floor tile, stair, lining, skirting, counter top, all the applications for marblework, dressing and sculpture



Chiseled (scale 1:1)

■ CALCAREOUS STONES | BLUE STONES

Tournai stone - Tournai black



ALSO KNOWN AS / VARIETIES

Tournai, Noir Clovis, Noir Childéric



EXTRACTION ZONE

Region of Tournai, province of Hainaut



MINERALOGICAL COMPOSITION

Calcite 75-80 %, silica 16-20 %, traces of dolomite and of pyrite



MAXIMUM DIMENSIONS OF ROUGH BLOCKS

Length 2 m width 1 m thickness 0,8 m



MINIMUM THICKNESS FOR APPLICATION

2 cm



SURFACE TREATMENT

Split, sbattu, striated, bush-hammered, sclypé, combed, chiseled, old cut, sawn, grinded, honed, polished



COMMON APPLICATIONS

Outside: rubble stone, floor tile, paving stone, dressed stone, sill, thin cladding, wall coping, border, window and door sill, stair, rockfill

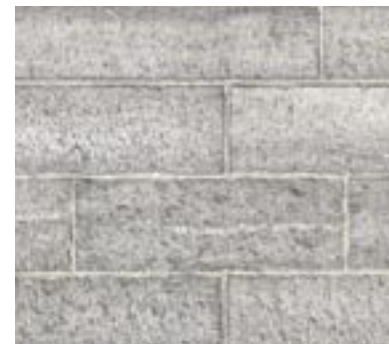
Inside: floor tile, stair, lining, skirting, counter top, all the applications for marblework, dressing and sculpture



Tournai



Tournai



Polished (scale 1:1)



Charleroi - Arch. J. César J. André



Brussels - Arch. H. Claus



Houffalize

CALCAREOUS STONES | MARBLES

Golzinne black marble

ALSO KNOWN AS / VARIETIES
*Noir de Mazy, Noir fin, Noir belge /
Marbre noir de Dinant*

+ EXTRACTION ZONE
Region of Mazy / Region of Dinant, province of Namur

() MINERALOGICAL COMPOSITION
Mainly calcite

□ MAXIMUM DIMENSIONS OF ROUGH BLOCKS
Length 3 m width 1,5 m thickness 0,5 m

▭ MINIMUM THICKNESS FOR APPLICATION
2 cm

☂ SURFACE TREATMENT
Mainly honed and polished

🏠 COMMON APPLICATIONS
Outside: rubble stone
Inside: floor tile, skirting, sill, wall cladding, step,
chimney, fine sculpture



Griotte polished (scale 1:1)

■ CALCAREOUS STONES | MARBLES

Coloured marbles



ALSO KNOWN AS / VARIETIES

Griotte, rouge royal, byzantin, "jaspe," rouge de Flandre, impérial, gris dévonien, gris des Ardennes, gris de Hautmont, gris Saint-Edouard, gris Versailles / Grand Antique de Meuse, Rubané de Tailfer



EXTRACTION ZONE

Region of Philippeville / Region of Lustin, province of Namur



MINERALOGICAL COMPOSITION

Calcite 90-97%, with traces of quartz, dolomite and ferruginous minerals



MAXIMUM DIMENSIONS OF ROUGH BLOCKS

Length 3,5 m width 1,6 m thickness 1,6 m



MINIMUM THICKNESS FOR APPLICATION

1,5 cm / 2 cm (reinforced)



SURFACE TREATMENT

Split or sawn edges, all standard finishes and cuts of marblework, mainly honed and polished

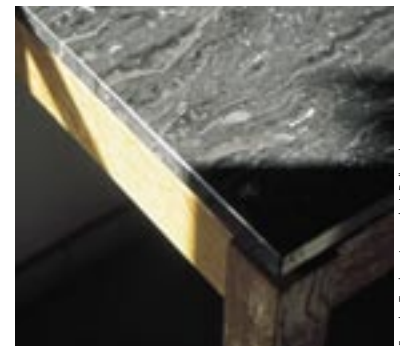


COMMON APPLICATIONS

Outside: rubble stone, floor tile, paving stone
 Inside: floor tile, lining, skirting, sill, sculpture, furniture



Namur - Arch. Atelier 4D



Faux-les-Tombes - Ing.-arch. J. Diebroeck



Aachen (D)



Golden grey polished (scale 1:1)



Vocellée - Ing.-arch. J. Delbroek



Brussels



Brèche



Rouge royal honed (scale 1:1)



Griotte honed (scale 1:1)



Pink grey polished (scale 1:1)



Grand Antique de Meuse polished (scale 1:1)



Cleaved rubble stone (scale 1:1)

CALCAREOUS STONES | WHITE STONES
Fontenoille sandy limestone



ALSO KNOWN AS / VARIETIES

Fontenoille stone, Fontenoille sandstone, Sinemurian calcareous sandstone, *Calcaire gréseux de Fontenoille*



EXTRACTION ZONE

Gaume region, province of Luxemburg



MINERALOGICAL COMPOSITION

Quartz 32,4 %, calcite 65,7 %, traces of dolomite and ferruginous minerals



MAXIMUM DIMENSIONS OF ROUGH BLOCKS

Length 1,2 m width 1-2 m thickness 0,45 m



MINIMUM THICKNESS FOR APPLICATION

3 cm



SURFACE TREATMENT

Split, trimmed, sawn, grinded



COMMON APPLICATIONS

Outside: rubble stone, corner, voussoir, window and door sill (thin facing), paving stone, floor tile, border, stair)

Inside: floor tile



Liège - Arch. Cl. Strebelle



Avroth (P)





Chiseled (scale 1:1)

CALCAREOUS STONES | WHITE STONES

Gobertange sandy limestone



Brussels



Brussels



Liège - Arch. Atelier du Sart Tilman

ALSO KNOWN AS / VARIETIES
Gobertange stone, Bruxellian stone,
Calcaire gréseux de Gobertange

+ EXTRACTION ZONE
Region of Jodoigne, province of Walloon Brabant

() MINERALOGICAL COMPOSITION
Calcite 73-87%, quartz 11-25%, traces of ferruginous
minerals

□ MAXIMUM DIMENSIONS OF ROUGH BLOCKS
Length 0,7 m width 0,4 m thickness 0,12 m

▭ MINIMUM THICKNESS FOR APPLICATION
6 cm

☂ SURFACE TREATMENT
Split, chiseled, aged, sawn, grinded, honed, easy cutting
and moulding

🏠 COMMON APPLICATIONS
Outside: rubble stone, dressed stone, window and
door sill, floor tile, paving stone
Inside: chimney



Cleaved rubble stone (scale 1:1)

SILICEOUS STONES

Condroz sandstone



ALSO KNOWN AS / VARIETIES

Hard sandstone, Condroz psammite, Meuse sandstone, Famennian sandstone, *Grès du Condroz*



EXTRACTION ZONE

Valleys of Amblève, Bocq, Hoyoux, Ourthe and Samson, provinces of Liège and Namur



MINERALOGICAL COMPOSITION

Quartz 62-78%, lesser amounts of mica and feldspar



MAXIMUM DIMENSIONS OF ROUGH BLOCKS

Length 2 m width 1-2 m thickness 07-1,5 m



MINIMUM THICKNESS FOR APPLICATION

Horizontal element 2 cm



SURFACE TREATMENT

Split, rough split, trimmed, retouched, squared



COMMON APPLICATIONS

Outside: rubble stone, step, wall coping, corner, window and door sill, claddingstone, paving stone, thin paving stone, floor tile, small tile, border
Inside: interior decoration



Loré



Liège - Arch. C.I. Strebelle



Cleaved rubble stone (scale 1:1)



Walmedy



Walmedy



Cleaved rubble stone (scale 1:1)



Cleaved rubble stone (scale 1:1)



Cleaved rubble stone (scale 1:1)



Cleaved rubble stone (scale 1:1)

SILICEOUS STONES

Arkose



ALSO KNOWN AS / VARIETIES

Pierre de Boussire, Pierre de Waimes, Pierre des Hautes Tailles



EXTRACTION ZONE

North-Eastern Ardennes, province of Liège



MINERALOGICAL COMPOSITION

Quartz 70-80 %, feldspar 6-15 %, mica and ferruginous minerals



MAXIMUM DIMENSIONS OF ROUGH BLOCKS

Length 1,5-2 m width 1 m thickness 0,5-1,5 m



MINIMUM THICKNESS FOR APPLICATION

Tile 3 cm - rubble stone 8 cm



SURFACE TREATMENT

Cleaved, half trimmed, retouched



COMMON APPLICATIONS

Outside: rubble stone, cornerstone, window and door sill, floor tile, wall coping
Inside: interior decoration



Baeren - Arch. Y. Delhez



Géromont



Waimes - Arch. Dethier



Cleaved rubble stone (scale 1:1)

SILICEOUS STONES

Quartzite

ALSO KNOWN AS / VARIETIES
Pierre de Spixhe, Pierre de Staneux

+ EXTRACTION ZONE
Region of Theux, province of Liège

() MINERALOGICAL COMPOSITION
Quartz 95-97 %, traces of ferruginous minerals

□ MAXIMUM DIMENSIONS OF ROUGH BLOCKS
Length 1 m width 0,6 m thickness 0,9 m

▭ MINIMUM THICKNESS FOR APPLICATION
6 cm

☂ SURFACE TREATMENT
Rough split, trimmed, little rough-hewn

🏠 COMMON APPLICATIONS
Outside: rubble stone, floor tile, step, wall coping
Inside: interior decoration



La Redt - Arch. C. Jennes



Hasselt - Arch. Groep Delta



Theux



Cleaved rubble stone (scale 1:1)

SILICEOUS STONES

Schistose sandstone



ALSO KNOWN AS / VARIETIES

Grès de la Warche, Pierre de Paliseul, Pierre de Mouzaive, Pierre de Ranhissart



EXTRACTION ZONE

Ardennes, provinces of Liège and Luxemburg



MINERALOGICAL COMPOSITION

Combination of silica, clayey, ferruginous and aluminiferous minerals



MAXIMUM DIMENSIONS OF ROUGH BLOCKS

Length 0,5-3 m width 0,25-2 m thickness 0,4 m varies with type



MINIMUM THICKNESS FOR APPLICATION

Tile 3 cm - vertical element 5 cm



SURFACE TREATMENT

Untreated, split, sometimes sawn



COMMON APPLICATIONS

Outside: flat rubble stone, corner, voussoir, lintel, floor tile, wall coping, sill, furniture
Inside: floor tile, interior decoration



Mont-Malmedy - Arch. N. Nelles



St-Vith - Arch. N. Nelles



Rochehaut



Cleaved rubble stone (scale 1:1)



Saint-Hubert - Arch. M. Grondal



Munschausen (L)



Florenville - Arch. R. Delviesmaison



Cleaved rubble stone (scale 1:1)



Cleaved rubble stone (scale 1:1)



Cleaved rubble stone (scale 1:1)



Cleaved rubble stone (scale 1:1)



Cleaved rubble stone (scale 1:1)

SILICEOUS STONES

Schist



ALSO KNOWN AS / VARIETIES
Slate schist or phyllite / otrrélite



EXTRACTION ZONE
Ardennes, province of Luxembourg



MINERALOGICAL COMPOSITION
Combination of dominant clayey minerals, siliceous, ferruginous and alumniferous minerals



MAXIMUM DIMENSIONS OF ROUGH BLOCKS
Length 3 m width 2 m thickness 1 m



MINIMUM THICKNESS FOR APPLICATION
1 cm - roofing slate 0,2 cm



SURFACE TREATMENT
Untreated, split, sawn, honed, polished, even carved in the case of Otrré stone



COMMON APPLICATIONS
Outside: rubble stone, corner, voussoir, window and door sill, sill, step, wall coping, floor tile, furniture, roofing slate and wall covering
Inside: counter top, floor tile, interior decoration



Warampage - Arch. F. Simon



Cugnon



Amsterdam (N)



Paving stone (scale 1:1)

SILICEOUS STONES

Flint



Basenge



Fécamp (F)



Rouxmesnil Bouvillies (F)

ALSO KNOWN AS / VARIETIES
Silex d'Eben-Emael

+ EXTRACTION ZONE
Region of Eben-Emael, province of Liège

() MINERALOGICAL COMPOSITION
Silica 94%

□ MAXIMUM DIMENSIONS OF ROUGH BLOCKS
Length 1,2 m width 0,8 m thickness 0,3 m

▭ MINIMUM THICKNESS FOR APPLICATION
5 cm

☰ SURFACE TREATMENT
Rough-hewn to well-squared

🏠 COMMON APPLICATIONS
Outside: rubble stone, corner, voussoir, window and door sill, paving stone
Inside: chimney



Mont-Malmedy - Arch. Artau

COMMON APPLICATIONS

Architecture

	Rubble stone	Thin facing	Linear element
Blue limestone	■	■	■
Vinalmont-limestone	■	■	■
Longpré-limestone	■	■	■
Tournai-limestone	■	■	■
Black marble	■		
Coloured marbles	■	■	■
Fontenoille-sandstone	■		■
Gobertange-sandstone	■		■
Condroz-sandstone	■		
Arkose	■		
Quartzite	■		
Schistose sandstone	■		■
Schist	■	■	■
Flint	■		



Saint-Tilman - Arch. D. Dethier



Saint-Niklaas - Arch. Storme-Van Ranst



Mons - Arch. Bureau AURA

A TRADITION OPEN TO ALL INNOVATIONS

The local stone blends ideally into our natural and built-up landscape, even into the boldest achievements. Renovation, restoration, contemporary architecture, it combines harmoniously with wood, concrete, glass or metal, in a frank and original dialogue. Its aesthetic and building qualities make it an additional asset for a peaceful environment.



Plainevaux - Arch. D. Dethier

COMMON APPLICATIONS

Interior design

STONE, A LIVING MATERIAL

Always more beautiful to look at as the years go by, stone naturally finds its place in your everyday life, in your home or at work. Long-lasting and easy to keep clean, stone is a first-choice material for interior design purposes. It takes an active part in your indoor comfort and serenity combining practical and aesthetic characteristics.



Antwerpen - Arch. F. Marcq



Wijsschaete - Arch. J. Cottreel



Brussels - Arch. M. Keymollen

Thin facing	Tile	Straight-line element	Decoration	
■	■	■	■	Blue limestone
■	■	■	■	Vinalmont-limestone
■	■	■	■	Longpré-limestone
■	■	■	■	Tournai-limestone
■	■	■	■	Black marble
■	■	■	■	Coloured marbles
	■	■	■	Fontenoille-sandstone
	■	■	■	Gobertange-sandstone
			■	Condroz-sandstone
			■	Arkose
			■	Quartzite
	■		■	Schistose sandstone
■	■	■	■	Schist
			■	Flint



Brussels - City architect

COMMON APPLICATIONS

City and garden developments

	Paving stone	Tile	Linear element	Furniture
Blue limestone	■	■	■	■
Vinalmont-limestone	■	■	■	■
Longpré-limestone	■	■	■	■
Tournai-limestone	■	■	■	■
Black marble				
Coloured marbles	■			
Fontenoille-sandstone	■	■	■	■
Gobertange-sandstone	■	■		
Condroz-sandstone	■	■	■	
Arkose				
Quartzite				
Schistose sandstone		■		■
Schist		■		■
Flint				

LOCAL STONE, AN INTEGRAL PART OF NATURE

Stone is instrumental in creating a quality living environment, in our towns and cities and in our gardens. Whether on a boulevard or in a public square, in a garden or on a terrace, stone meets all your requirements. Stone is resistant to weathering and pollution and retains all its characteristics in a happy association with nature and the city.



Etire - Arch. Jardins idées 0



Louvange - Arch. J. Wirtz



Costende - Arch. Belconsulting

Editing and coordination Cristina Marchi
Graphic design and production Noir Quadri
Photoengraving Noir Quadri
Printing Imprimerie François
Illustrations Serge Brison © Pierres et Marbres de Wallonie,
Histoires d'images, Françoise Denoël, Yannis Argyropoulos
© Pierres et Marbres de Wallonie, Guy Focant, Laurent Lecocq,
Daylight, Silvio Cassano
Publisher V. Brancaleoni, 54 rue Joseph Potier,
B-4140 Sprimont

Printed in Belgium in august 2005 © Pierres et Marbres de Wallonie asbl - All rights reserved. No part of this brochure may be reproduced, translated or adapted, in any country.
Copyright : D/2005/9356/9

The information contained in this brochure is based on the currently available official parameters. Any additional information may be obtained from the producers.

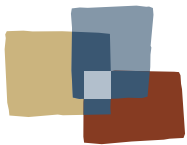
We would like to thank the architects whose works have been used to illustrate this brochure. We apologize to those who have not been mentioned here and invite them to contact the Association.

The "Pierres et Marbres de Wallonie" association benefits from the active support of its members, the Walloon Minister for the Environment, the General Administration for Natural Resources and the Environment in the Walloon Region, the Walloon Export Agency.



The association "PIERRES et MARBRES de WALLONIE" provides a quality service offering information on stone and its uses, for the general public, architects, entrepreneurs and local authorities:

- > technical and general information;
- > awareness and tools for providing information;
- > technical research;
- > contacts between different partners within the sector and authorities.



PIERRES & MARBRES WALLONIE

PIERRES et MARBRES de WALLONIE asbl
Head office: Rue Joseph Potier 54 · B-4140 Sprimont · T +32 (0)4 382.32.69 · F +32 (0)4 382.32.68
Offices: Chaussée de Louvain 159 · B-5004 Namur · T +32 (0)81 83.48.11 · F +32 (0)81 22.76.64
info@pierresetmarbres.be · www.pierresetmarbres.be



Everything you would like to know
about the stones and marbles of Wallonia,
the quarries and their products

www.pierresetmarbres.be



PIERRES & MARBRES WALLONIE