



The Vinalmont Quarry

VINALMONT MEUSE LIMESTONE



Old cut (scale:1:1)



Split and sand-blasted rubble stones

Vinalmont Meuse limestone

ALSO KNOWN AS

Vinalmont stone, Meuse stone

TYPE

Oolitic limestone

STRATIGRAPHICAL AGE

Mid-Visean (V2a, Lower Carboniferous, Palaeozoic)



LOCAL QUARRY FOR A QUALITY SERVICE

The CARRIÈRE DE VINALMONT company has been in existence since 1910. It has almost one hundred years of experience in all applications of ornamental stone destined for the construction sector and for sculpture.

The company has a deposit of Vinalmont limestone covering a surface area of 85 hectares on the Wanzoule plain in the village of Wanze. This has enabled it to guarantee the availability of its products on the market for over a century, ensure the future of its 35-strong workforce and maintain a policy of development adapted to the needs of its clients. Furthermore, it applies a very active policy regarding investments in order to keep up with all the latest techniques, which allows it to guarantee the quality of its products and meet delivery deadlines.

Vinalmont limestone is of great chemical purity. Moreover, this very finely grained stone is free of crinoids, which enables it to be easily identified.



Brussels, arch. M. Jaspers

WORKING SITE

Carrière de Vinalmont
4520 WANZE

TECHNICAL CHARACTERISTICS

MINERALOGICAL COMPOSITION

Calcite > 99 %

ATTRIBUTES / PERFORMANCE TECHNICAL APPROVAL

These data are available on www.pierresetmarbres.be and on the sites of the official bodies, they are measured according to the procedures of European standards in force and regularly updated.

MAXIMUM DIMENSIONS OF BLOCKS*

	Length	Width	Thickness
Blocks	2.2 m	1.2 m	1.35 m
Slices	2.2 m	1.2 m	2-50 cm

MINIMUM THICKNESS FOR APPLICATION*

1.5 cm

APPEARANCE, COLOUR AND PATINA

This finely grained stone is of great chemical purity and free of crinoid traces. It is characterized by the presence of microscopic spherules known as oolites, arranged in slightly interlaced stratifications. This highly characteristic structure enables it to be identified immediately.

When freshly split, it is dark grey in colour, but quickly acquires a light grey, slightly beige patina. In exterior usage, its patina is light, almost white, when it has been given a dressed finish. After a marble finish, it displays a mid-grey and brown polish, very uniform in appearance.

FINISHED PRODUCTS AND STANDARD DIMENSIONS

This material may be given a wide variety of cuts and finishes and an extremely wide range of sizes. This makes it highly sought-after, as it can be applied in so many different ways, both inside and out: rubble stones, floor tiles, dressed stones and thin covering, lining, skirting boards, plinths, mantelpieces, doorsteps, surrounds for bay windows, steps, wall covering, borders and stone layers. It can also be used by craftsmen, as pieces of furniture, stairs, etc.

Dressed stones

20 x 20 to 60 x 60 cm, thickness 1.5-4 cm
free length, width 15/20/25/30/40 cm

Mantelshelves

width 18/20/22/25 cm, thickness 2 cm

Doorsteps

width 18/20/22/25 cm, thickness 5 cm

Skirting board

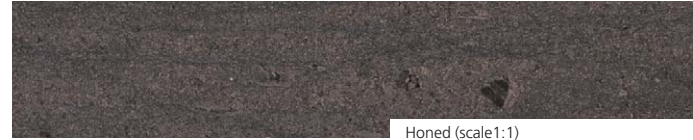
width 7/8/10 cm, thickness 2 cm

It is not recommended to order a surface over 0.5 m² and a length over 1.2 m. For anything in excess of these dimensions, specific measures must be taken when the stone is being applied. Non-standard dimensions may be asked on direct request to the producer.

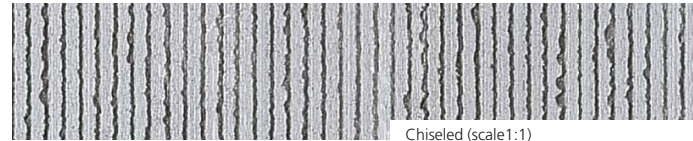
Non-standard dimensions and advice on application and maintenance, can be obtained directly from the producer.



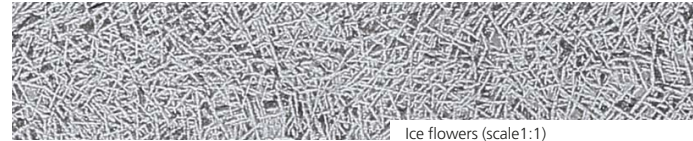
Grinded (scale 1:1)



Honed (scale 1:1)



Chiseled (scale 1:1)



Ice flowers (scale 1:1)

SURFACE TREATMENTS AVAILABLE

STANDARD CUTS		MINIMUM THICKNESS	STANDARD THICKNESS AND SPECIFIC FEATURES
Split		4 cm	8-12 / 12-15 / 15-20 cm
Sbattu	thick	5 cm	mechanical 5 cm
	thin	4 cm	mechanical 4 cm
Bush-hammered	thick	5 cm	manual 6 cm - 15/25 sawteeth mechanical 4 cm
	thin	4 cm	manual 5 cm - 49 sawteeth mechanical 4 cm
Sclypé		5 cm	5 cm - 12 lines/dm
Combed		5 cm	5 cm - 10 lines/dm
Chiseled		3 cm	manual 4 cm - 15/20/25 strikes/dm
Old cut		4 cm	4 cm
Ice flowers		3 cm	4 cm

STANDARD FINISHES		MINIMUM THICKNESS MEC.	MAN.	STANDARD THICKNESS AND SPECIFIC FEATURES
Grinded		2 cm		3 cm
Sand-blasted		2 cm		2 cm
Honed		1.5 cm		2 cm
Polished		1.5 cm		2 cm

DESCRIPTIVE SPECIFICATIONS

«Oolitic limestone, grey in colour, stratigraphical age Mid-Visean (Lower Carboniferous, Palaeozoic). The stone will be sound, of good quality, and will give off a clean sound when struck with a metallic hammer».

* Values shown are for reference only.

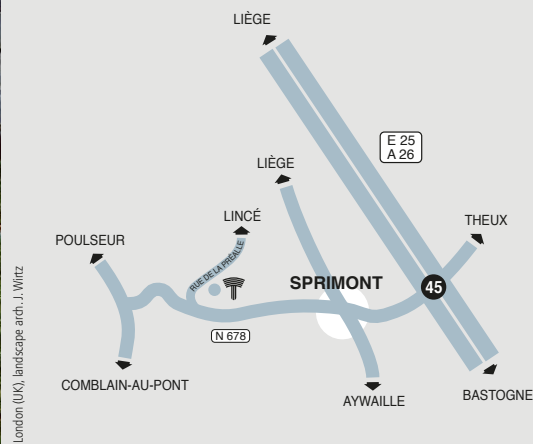


CARRIÈRE DE VINALMONT S.A.

Rue de la Préalée, 31 · B-4140 CHANXHE
Tel. +32 (0)4 369 99 66 · Fax +32 (0)4 369 99 67

info@calcairedevinalmont.be
www.calcairedevinalmont.be
VAT BE 0633 658 339 · RPM Liège

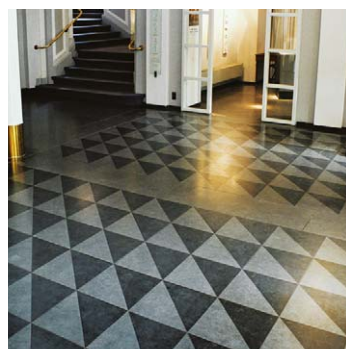
Manager: Stijn Renier



London (UK), landscape arch. J. Witz



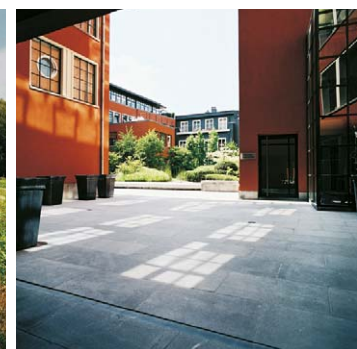
Overijse, arch. E. Lorquet



Namur, arch. Th. Lanotte



Sart Tilman, arch. P. Greisch



PIERRES & MARBRES WALLONIE



Belgian
Blue limestone



Wallonie



Wallonia.be
EXPORT
INVESTMENT