



The Rhisnes Quarries

RHISNES SANDSTONE





Sandstone

ALSO KNOWN AS

Pierre d'avoine, Rhisne sandstone

TYPE

Mica sandstone

STRATIGRAPHICAL AGE

Famennian (Upper Devonian, Palaeozoic)



LOCAL QUARRIES FOR A QUALITY SERVICE

The Rhisnes Quarry was a manufacturer of thin paving stone until 1940 and since then the Quarry has become a producer of rubble stone for both untreated and squared masonry, including "dry laying", not to mention incidentally the various aggregates used for outdoor decoration.

Since 1968, the Rhisnes Quarry proposes an extensive range of sandstone products to both their local and national customers. The sandstone comes in exclusive shades of beige-yellow with a few hints of rust.

Our privileged geographical position (2 km from the E42 and 10 km from the E411 motorways) means that we can be easily reached by both professional and private customers seeking a stone perfectly to their liking.

WORKING SITE

Carrières de Rhisnes
Rue du bois de Ban - B-5080 RHISNES

TECHNICAL CHARACTERISTICS

MINERALOGICAL COMPOSITION

Mostly composed of quartz with a much smaller amount of micas and feldspars

ATTRIBUTES / PERFORMANCE

These data are available on www.pierresetmarbres.be and on the sites of the official bodies, they are measured according to the procedures of European standards in force and regularly updated.

MAXIMUM DIMENSIONS OF BLOCKS*

Length
2 m

Width
1 m

Thickness
0,5-1 m

MINIMUM THICKNESS FOR APPLICATION*

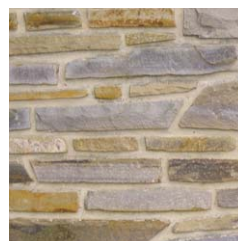
2 cm



Roughly dressed rubble stone



Squared rubble stone



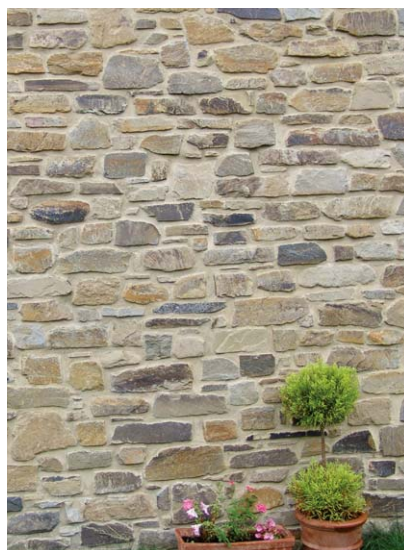
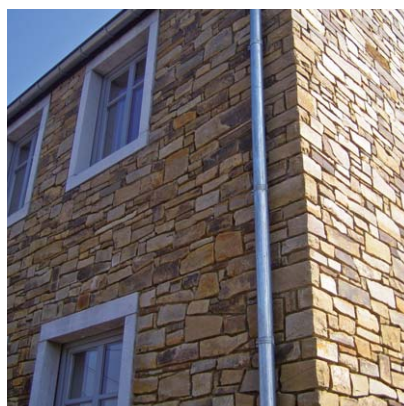
Roughly dressed rubble stone



Cleaved rubble stone



Quoins



Untreated and ungraded rubble stone

APPEARANCE, COLOUR AND PATINA

The sandstone comes in exclusive shades of beige-yellow with a few hints of rust and dark.

FINISHED PRODUCTS AND STANDARD DIMENSIONS

Thanks to its outstanding mechanical qualities, sandstone lends itself admirably to applications using every type of rubble stones, steps, wall coverings, quoins, surrounds for bay windows, dressed faces, for exterior use as well as for interior and decorative purposes. Its natural anti-skid qualities make it ideal for floor-covering.

Rubble stones

height 3-7/5-10/8-16/10-20 cm, free length
depth 8-12/10-15/10-20/15-20/15-25 cm

Untreated and ungraded rubble stone

height 5-20 cm, depth 10-15 cm

Cleaved untreated rubble stone

height 5-20 cm, depth 5-10/10-15 cm

Corners

in all sizes

Floor tiles "opus incertum"

thickness 4-7 cm

Non-standard dimensions, and advice on application and maintenance, can be obtained directly from the producer.

SURFACE TREATMENTS AVAILABLE

Cleaved and retouched to a greater or lesser degree, to even out the contours of the pieces for all forms of rough, retouched and squared finish.

DESCRIPTIVE SPECIFICATIONS

«Fine-grained, decalcified, slightly micaceous, argillaceous sandstone, usually beige yellow in color, from the Famennian stratigraphic interval (Upper Devonian, Palaeozoic)».

* Values shown are for reference only.



CARRIÈRES DE RHISNES S.A.

Route de Bruxelles (N 4) 800 m from E42

B-5080 RHISNES - La Bruyère

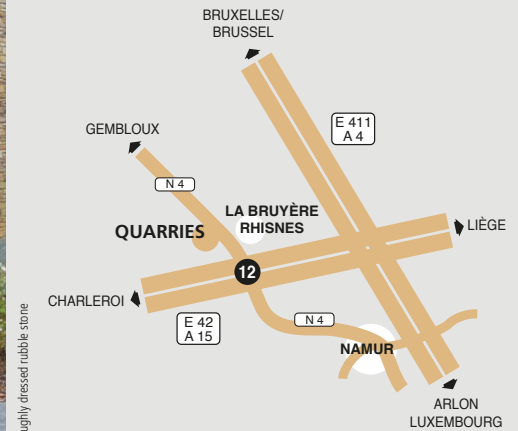
Tel. +32 (0)81 56 93 18 · Fax +32 (0)81 56 82 99

julien.gilles@carrieresgilles.be · www.carrieresgilles.be

VAT BE 0445 770 329 · RPM Namur

Acting managing director: Gilbert Gilles

Open Monday through Friday from 8am to 12pm and
13pm to 17pm, Saturday from 9 am to 12 pm



Roughly dressed rubble stone



Dressed faces



Dry-stones walls



Off-cut



Selected thin stones



PIERRES & MARBRES WALLONIE



Wallonie



Wallonia.be

EXPORT
INVESTMENT