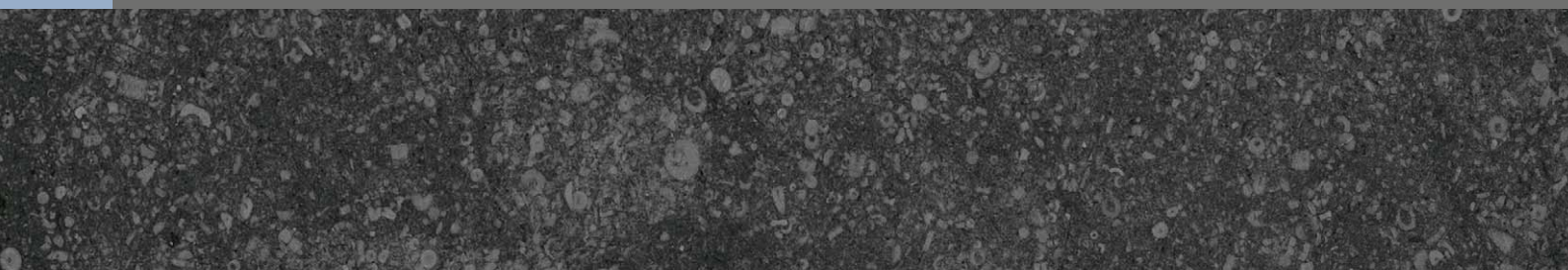


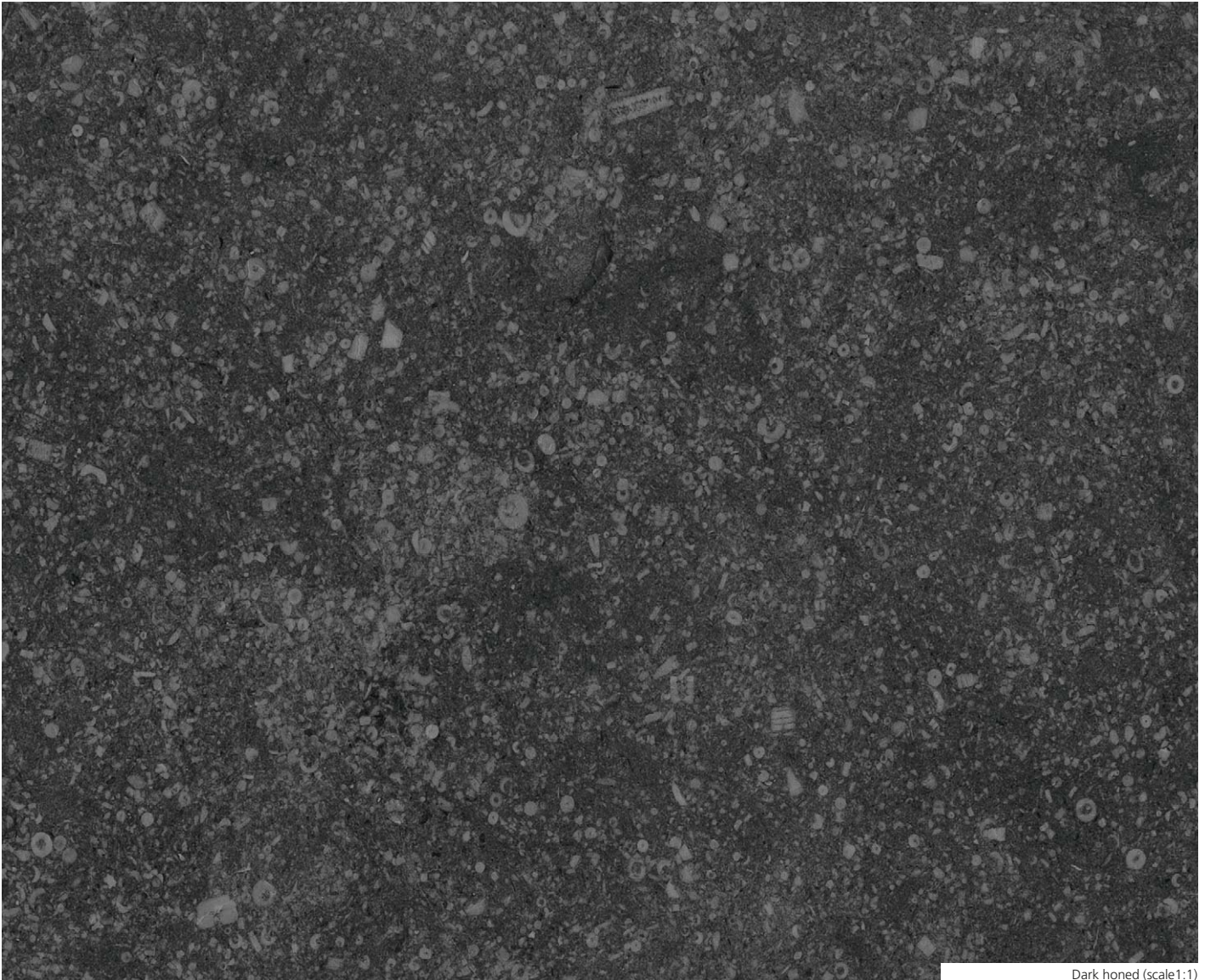


Gare des Guillemins, Liège, arch. S. Calatrava

Les carrières de la Pierre Bleue Belge S.A.

PETIT GRANIT - BELGIAN BLUE LIMESTONE





Dark honed (scale 1:1)



Drilling to extract the stone

Petit granit | Belgian blue limestone

ALSO KNOWN AS	TYPE	STRATIGRAPHICAL AGE
Blue stone, <i>Petit granit - Pierre bleue de Belgique</i> ®	Crinoidal limestone	Upper Tournaisian (Lower Carboniferous, Palaeozoic)

LOCAL QUARRIES FOR A QUALITY SERVICE

The S.A. "LES CARRIÈRES DE LA PIERRE BLEUE BELGE" is a company that owns three major quarries excavating PETIT GRANIT - BELGIAN BLUE STONE®. The three quarries are located in the Soignies area, the European centre of dressed stone. They are GAUTHIER-WINCQZ in Soignies, CLYPOT in Neufvilles and TELLIER DES PRÉS on the municipalities of Soignies, Braine-le-Comte and Ecaussinnes. Quarrying operations began at the latter quarry in 2008 and it will gradually take over from the Soignies site where quarrying has been taking place without interruption since the 17th century and which is close to depletion.

Together they employ 215 people. Annual turnover varies between € 21,000,000 and € 25,000,000, 30% of which is destined for the export market.

WORKING SITE

Carrières Gauthier & Wincqz - 7060 SOIGNIES
Carrière du Clypot - 7063 NEUFVILLES
Tellier des Prés - 7060 SOIGNIES

TECHNICAL CHARACTERISTICS

MINERALOGICAL COMPOSITION

Calcite ± 96 %, traces of dolomite, quartz and pyrite

ATTRIBUTES / PERFORMANCE TECHNICAL APPROVAL

These data are available on www.pierresetmarbres.be and on the sites of the official bodies, they are measured according to the procedures of European standards in force and updated.

MAXIMUM DIMENSIONS OF BLOCKS*

Length
4 m

Width
2 m

Thickness
2 m

MINIMUM THICKNESS FOR APPLICATION*

Facing
2 cm

Paving
1 cm

APPEARANCE, COLOUR AND PATINA

This stone is characterized by the presence of a great many fossil remains, cemented together by a microcrystalline gangue containing very finely divided carbon. When the stone is freshly broken, the fossils produce a sparkling effect through the action of the light on the facets. The crinoids, corals and shells stand out pale against a dark background, which varies from light grey to black, through a range of bluish shades, according to the finish. The stone becomes lighter with exposure to harsh weather conditions, through the surface washing of the interwoven carbon.

FINISHED PRODUCTS AND STANDARD DIMENSIONS

This stone is widely admired for the numerous cuts and finishes it can take, as well as for huge range of sizes it can be given. It may be applied in several different ways, both inside and out.

EXTERIOR: "Green line" range (products for garden landscaping), smoothed paving slab, paving "Agripa", "Natura light", "Dalle de Soignies Clair", "Patrimony cobblestone", paving, roadside or garden borders, wall coping, stairs, boundary stone, ball, surround for a tree, bench, fountain, roundabout, sculpture, monument, etc.

FAÇADE: facing slab, base course, split rubble stones, "Clivodécor", door and window sill, door and window surround, column, console, band course, quoin, pilaster, bull's eye window, etc.

INTERIOR: paving slabs of standard thickness or thinly-cut, (1 or 1.5 cm), paving "Conception", "Natura blue", "Dalle de Soignies noir", "Abbaye", skirting board, window sill, kitchen or bathroom worktop, stairs, fireplace, etc.

Dressed stones

length 30-180 cm, width 10-60 cm, thickness 2-30 cm

Floor tiles

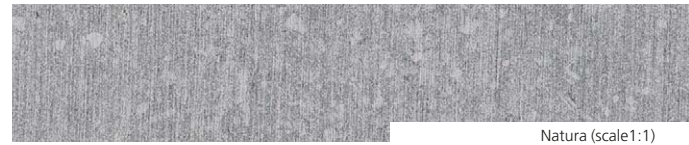
length 30-60 cm, width 15-60 cm, thickness 1-8 cm
free length, width 15/20/25/30/40 cm

Doorsteps

thickness 5/8/10/12/15 cm

It is not recommended to order a surface bigger than 0.5 m² and a length greater than 1.5 m. For anything over these dimensions, it is necessary to take specific measures when the stone is being applied. Non-standard sizes may be asked on direct request to the producers.

Non-standard dimensions, in addition to advice on application and maintenance, can be obtained directly from the producer.



SURFACE TREATMENTS AVAILABLE

CURRENT CUTS

Crusts, slices, tiles

CURRENT THICKNESSES

between 5 and 20 cm

CURRENT STANDARD CUTS

Flamed, chiseled, sawn, sanded grey, sanded blue

2 cm

Finely bush-hammered, ice flowers, old finish

3 cm

Sclypé, 12 or 15 strikes, combed

4 cm

Rough Sbattu, roughly bush-hammered

5 cm

Standard marble finishes: light honed, dark honed, conception, sanded down

1 cm

DESCRIPTIVE SPECIFICATIONS

«Petit granit - Belgian blue limestone, crinoid limestone, grey-blue in tone, stratigraphic period Upper Tournaisian (Lower Carboniferous, Palaeozoic), belonging to the category [to specify] in accordance with the classification taking account of particular features regarding structure and appearance, as established in technical information note n° 220 of the C.S.T.C. (2002).

This stone comes from quarries holding the Technical Approval certified by the U.B.A.tc, which covers the entire deposit. The finish and appearance will match the samples presented to the individual carrying out the project in question; these three contractual samples will show the standard appearance and the two extremes of variation allowed within the market.

Equivalence: Any proposed product or finish differing from the description given above must undergo the equivalence procedure described in manual 100.2 published by the department of construction quality at the Ministry of Communications and Infrastructure, now the Federal Public Service for the Economy.»

* Values shown are for reference only.



Galeries Royales Saint-Hubert, Bruxelles, arch. J.P. Cluysenaer

PIERRE BLEUE BELGE

LES CARRIÈRES DE LA PIERRE BLEUE BELGE S.A.

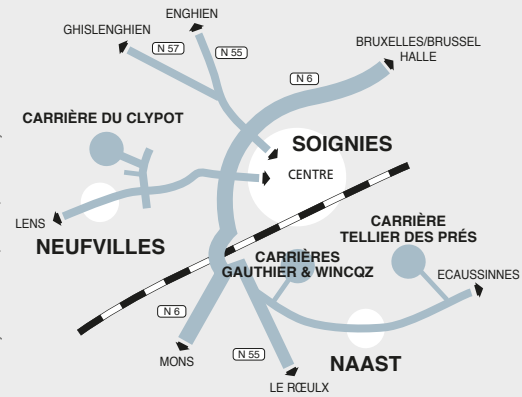
CARRIÈRE DU CLYPOT

Chemin des Carrières, 1 · B-7063 NEUFVILLES
Tel. +32 (0)67 34 68 00 · Fax +32 (0)67 34 68 01

CARRIÈRES GAUTHIER & WINCQZ

Rue Mademoiselle Hanicq, 88 · B-7060 SOIGNIES
Tel. +32 (0)67 33 21 16 · Fax +32 (0)67 33 91 37

info@pierrebleuebelge.be · www.pierrebleuebelge.be
VAT BE-453 112 239



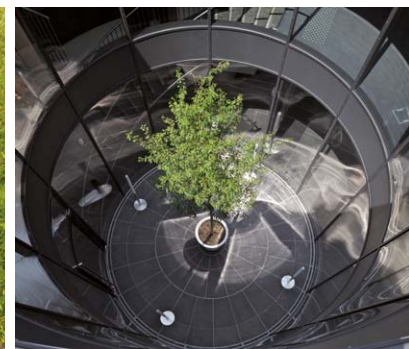
Cité du Design, Saint-Etienne, arch. Lin



Fontaine Magritte, Bruxelles, Luca Maria Patella



Jardin des Géants, Lille, arch. Mutabilis



Terminal Unijet, Le Bourget, arch. E. Famin



PIERRES & MARBRES WALLONIE

ISO 9001

atg

CE

291 | BENOR | 1830



Belgian
Blue limestone



Wallonie



Wallonia.be
EXPORT INVESTMENT