



BRG s.a. Quarry

FONTENOILLE SANDY LIMESTONE





Rubble stone (scale 1:1)

Fontenoille sandy limestone

ALSO KNOWN AS

Fontenoille stone, Fontenoille sandstone, Sinemurian calcareous sandstone

TYPE

Sandy limestone

STRATIGRAPHICAL AGE

Sinemurian
(Lias, Lower Jurassic, Mesozoic)



LOCAL QUARRY FOR A QUALITY SERVICE

Fontenoille sandy limestone comes from Gaume, in the south of the province of Luxembourg. The compact layers of this stone are slender and even. It has a distinctive warm, golden colour, developing a patina which lightens slightly over time. It is hard-wearing, so it can be cleaved to produce items for flooring and masonry - irregular rubble stones for the type of masonry known as lorraines, as well as rubble stones split to produce evenly arranged courses.

Cleaved into masonry products, it can also be sawn nowadays to create thin products for attaching with glue. Traditionally used to restore historic rural architecture, it also adds a special touch to your contemporary designs.

WORKING SITE

Les 4 Arbres, 100
6820 FONTENOILLE

TECHNICAL CHARACTERISTICS

MINERALOGICAL COMPOSITION

Quartz 32.4 %, calcite 65.7 %, traces of dolomite and ferruginous minerals

ATTRIBUTES / PERFORMANCE

These data are available on www.pierresetmarbres.be and on the sites of the official bodies, they are measured according to the procedures of European standards in force and regularly updated.

MAXIMUM DIMENSIONS OF BLOCKS*

Length
1-2 m

Width
1-2 m

Thickness
1 m

MINIMUM THICKNESS FOR APPLICATION*

Floor tiles
8 cm

Vertical elements
5 cm

Plaquettes
3 cm



APPEARANCE, COLOUR AND PATINA

This sandy limestone is formed by the accumulation of grains of quartz, millimetres in size, cemented together by calcite. The colours vary from pale yellow to greyish yellow and do not alter with time.

The thin, lens-shaped layers are interlaid with strata of yellow sand and a calcareous stone with a high shell content which only serve as rockfill and crushed rocks.

FINISHED PRODUCTS AND STANDARD DIMENSIONS

The hardness of this stone means that it is a good material for floor covering. It produces setts, floor tiles and edging, as well as items of masonry such as rubble stones, dressed and quarry stones, risers, quoins, moulding, thin covering. Although chiefly used on exteriors, it is also to be found as interior decoration.

Rubble stones

height 5-20 cm, length 15-70 cm, depth 8-12 / 13-17 cm

Adhesive plaques

height 5-20 cm, length 10-50 cm, thickness \pm 3 cm

Borders

any length, height 20-30 cm, thickness 8-10 / 10-12 cm

Setts

5-7 / 9-11 / 14 / 16 cm / oblongs

Non-standard dimensions and advice on application and maintenance, can be obtained directly from the producer.

SURFACE TREATMENTS AVAILABLE

Mainly split, sawn or sanded on request.

DESCRIPTIVE SPECIFICATIONS

«Sandy limestone, beige in colour, stratigraphical age Sinemurian (Lias, Lower Jurassic, Mesozoic)».

* Values shown are for reference only.



Liège, place de l'Opéra, arch. Claude Strebelle, 2000



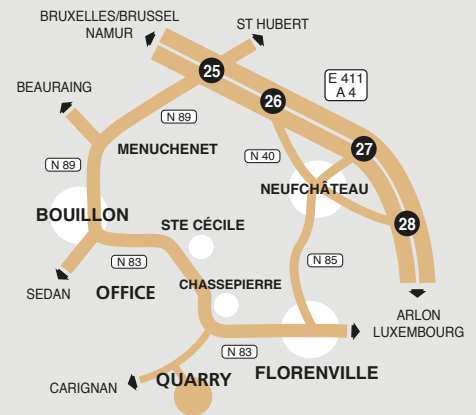
BRG S.A.

Head office: ZI Latour, 19 · B-6760 Virton
Tel. +32 (0)63 58 99 00

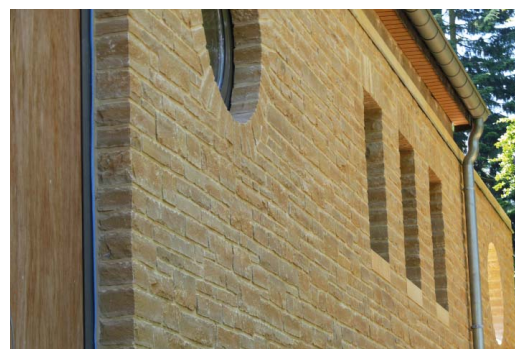
Site d'exploitation:
Les Quatre Arbres, 100 · B-6820 Fontenoille
Tel. +32 (0)61 32 84 60 · Fax +32 (0)61 46 05 78

www.brg-entreprises.com
carriere@brg-entreprises.com
VAT BE 0434 824 076 · RPM Arlon

Administrateurs délégués: Daniel Thiry - Rachel Thiry



Fountain, Marville (F)



Sainte Cécile, private house, arch. Yves Boutefeu, 1991



Dry stone masonry



PIERRES & MARBRES WALLONIE

