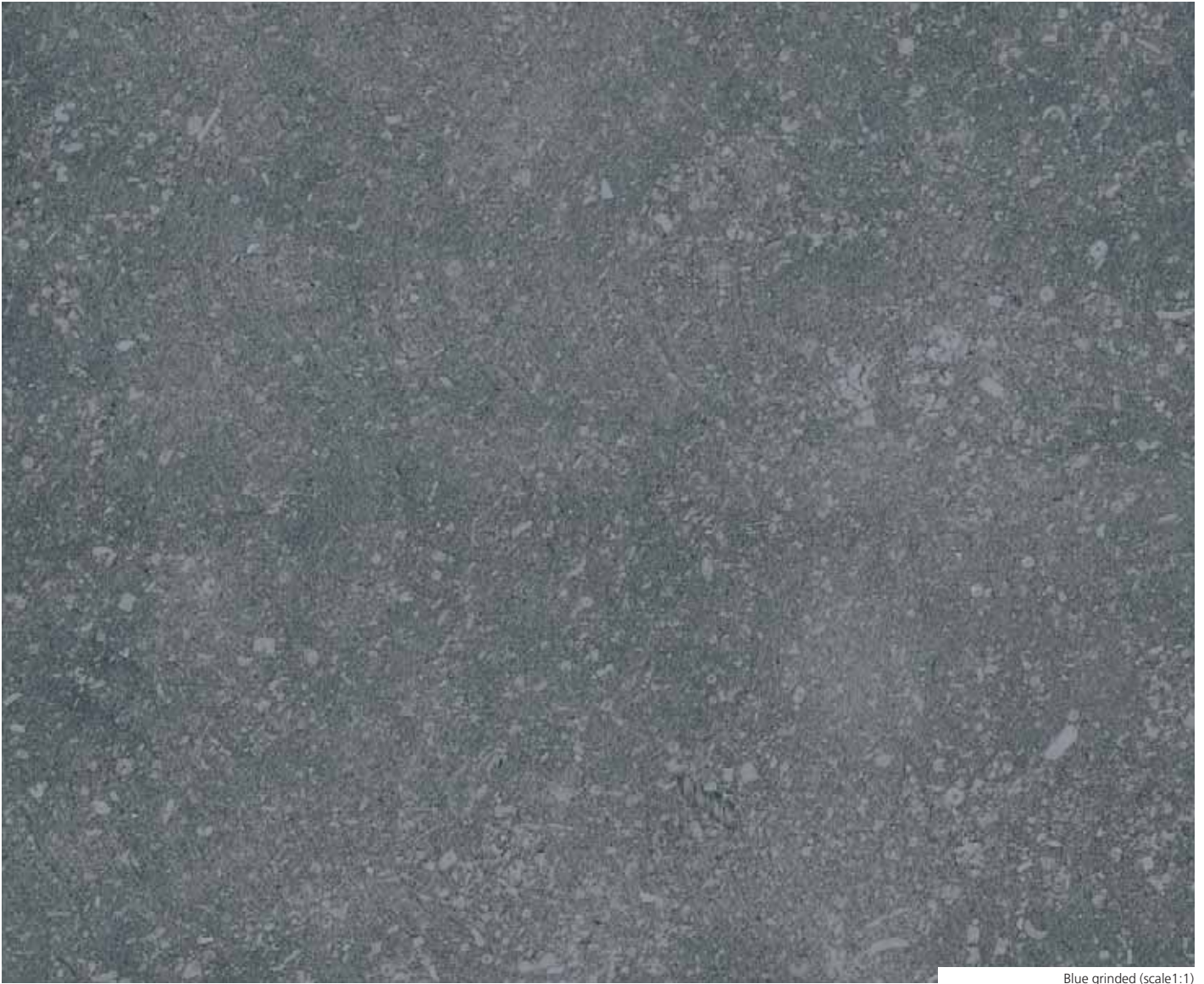




The Van Reeth-Hoefkens Quarries

PETIT GRANIT - BELGIAN BLUE LIMESTONE ■



Blue grinded (scale 1:1)



Petit granit | Belgian blue limestone

ALSO KNOWN AS	TYPE	STRATIGRAPHICAL AGE
Blue stone, <i>Petit granit</i> - <i>Pierre bleue de Belgique</i> ®	Crinoidal limestone	Upper Tournaisian (Lower Carboniferous, Palaeozoic)

LOCAL QUARRIES FOR A QUALITY SERVICE

In the heart of the Belgian Ardennes, along the Ourthe valley, the Van Reeth-Hoefkens family has been quarrying an excellent quality Blue Limestone for three generations.

Our quarries are located in Ouffet and Jenneret near Durbuy, which bills itself as “the smallest town in the world”.

By quarrying Blue Limestone, by sawing it and having it shaped by our own skilled personnel, we are perpetuating the tradition inherited from our forebears, showing the same concern for quality and perfection while benefiting from the technical advantages and developments of our time.



WORKING SITE

Carrières de La Baligaine - 4590 OUFFET
 Carrière Sentier Maraye - 4590 OUFFET
 Carrière Bende-Jenneret - 6941 BENDE-DURBUY

TECHNICAL CHARACTERISTICS*

MINERALOGICAL COMPOSITION

Calcite ± 96 %, traces of dolomite, quartz and pyrite

ATTRIBUTES

Apparent density
2686 kg/m³

Open porosity
0.31 % vol

PERFORMANCE

Compressive strength
146 N/mm²

Compressive strength after freeze
143 N/mm²

Flexural strength
22 N/mm²

Flexural strength after freeze
18 N/mm²

Abrasion resistance (Capon method)
19.3 mm

MAXIMUM DIMENSIONS OF BLOCKS

Length
3 m

Width
2 m

Thickness
1.8 m

APPEARANCE, COLOUR AND PATINA

This stone is characterized by the presence of a great many fossil remains, cemented together by a microcrystalline gangue containing very finely divided carbon. When the stone is freshly broken, the fossils produce a sparkling effect through the action of the light on the facets. The crinoids, corals and shells stand out pale against a dark background, which varies from light grey to black, through a range of bluish shades, according to the finish. The stone becomes lighter with exposure to harsh weather conditions, through the surface washing of the interwoven carbon.

FINISHED PRODUCTS AND STANDARD DIMENSIONS

This stone is widely admired for the numerous cuts and finishes it can take, as well as for huge range of sizes it can be given. It may be applied in several different ways, both inside and out: plinths, façades, as rubble stones, wall coverings, exterior tiles and setts, borders, doorsteps, surrounds for bay windows, window sills, interior paving, stairs, covering for interior walls, skirting boards, worktops, covering for bridges, rockfill, street furniture, as well as all the applications for marblework, dressing and sculpture.

Dressed stones

length <1.5 m, width <1.5 m, thickness 2-35 cm

Floor tiles

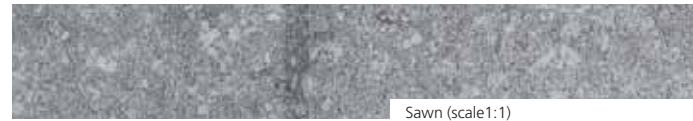
20x20 cm, 40 x 40 cm, 50 x 50 cm and specified measures thickness 2-5 cm

Doorsteps

Thickness 3, 5, 8, 10 and 12 cm

Rockfill

from 2 to 10,000 kg in compliance with NEN-EN 133383-1



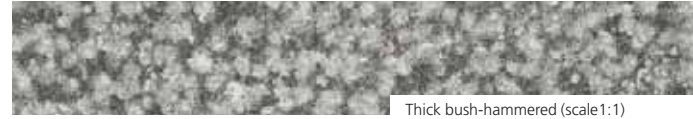
Sawn (scale 1:1)



Dark honed (scale 1:1)



Polished (scale 1:1)



Thick bush-hammered (scale 1:1)



Mechanical chiseled (scale 1:1)



Old cut (scale 1:1)



Flamed (scale 1:1)



Sclypé (scale 1:1)

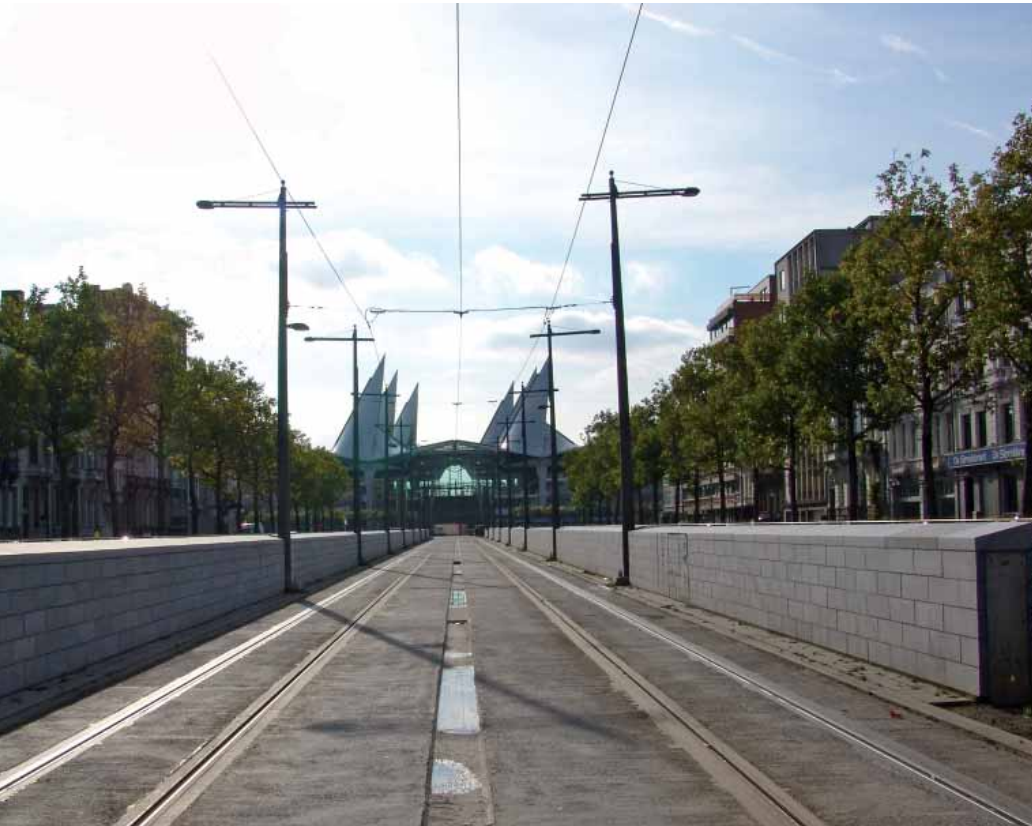
DESCRIPTIVE SPECIFICATIONS

«Petit granit - Belgian blue limestone, crinoid limestone, grey-blue in tone, stratigraphic period Upper Tournaisian (Lower Carboniferous, Palaeozoic), belonging to the category [to specify] in accordance with the classification taking account of particular features regarding structure and appearance, as established in technical information note n° 220 of the C.S.T.C. (2002).

This stone comes from quarries holding the Technical Approval certified by the U.B.A.tc, which covers the entire deposit. The finish and appearance will match the samples presented to the individual carrying out the project in question; these three contractual samples will show the standard appearance and the two extremes of variation allowed within the market.

Equivalence: Any proposed product or finish differing from the description given above must undergo the equivalence procedure described in manual 100.2 published by the department of construction quality at the Ministry of Communications and Infrastructure, now the Federal Public Service for the Economy.»

[*] Data are the most recent available, measured according to applicable European standards.

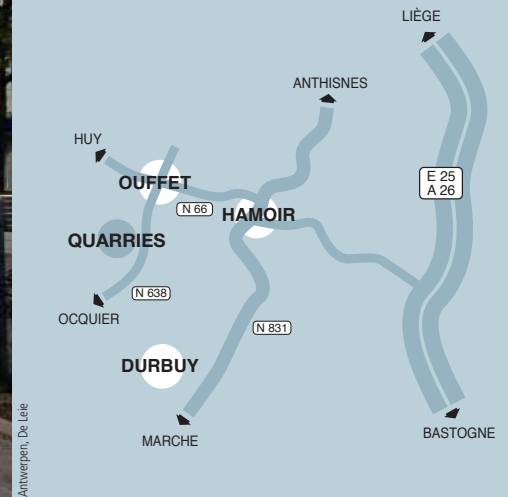


CARRIÈRES VAN REETH-HOEFKENS S.P.R.L.

Chemin de Cornéhé 1 · B-6941 DURBUY
Tel. +32 (0)86 36 61 49 · Fax + 32 (0)86 366150

info@vareho.be · www.vareho.be
VAT BE 0412 593 557 · RPM Marche

Acting managing director: Constant Van Reeth
Manager: Seppe Van Reeth



Antwerpen, De Leie



Krakke, Ijserplein



Private house



Lint, Alphacem



PIERRES & MARBRES WALLONIE

